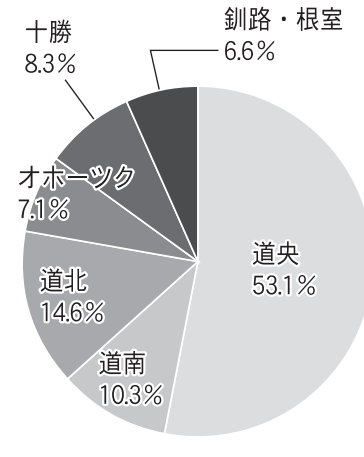


令和3年度(2021年度)観光入込客数(実人数)

Table showing tourism entry statistics for FY2021, categorized by quarter and region (Inland, Overseas, Foreign).

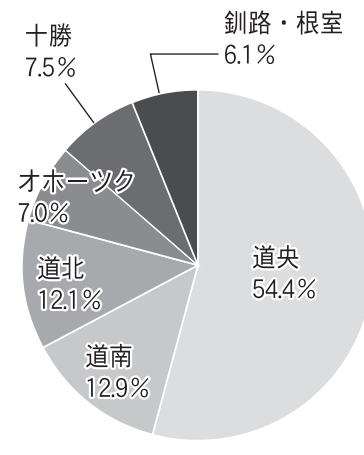
圏域別観光入込客数(延べ人数)

Table showing cumulative tourism entry statistics by region for FY2021.



圏域別宿泊客延べ数

Table showing cumulative overnight stay statistics by region for FY2021.



宿泊客794万人、前年度比12%増
元年度比は54.7%減にとどまる

Main text article discussing the recovery of tourism and the impact of COVID-19, mentioning the 12% increase in overnight stays and the 54.7% decrease from the previous year.

令和3年度 北海道観光入込客数調査

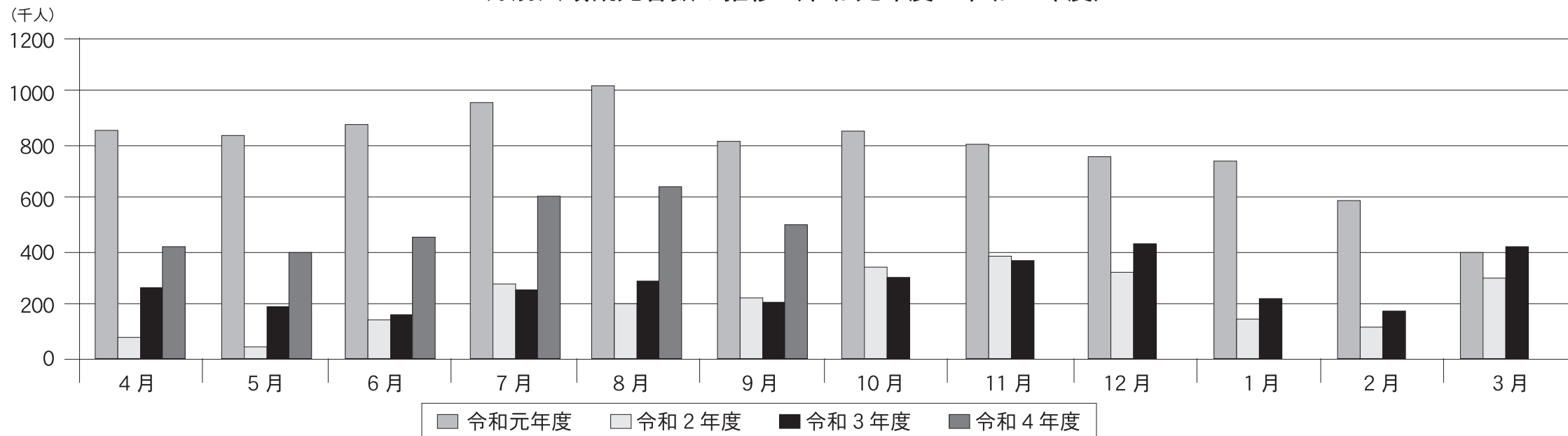
回復基調もコロナ禍前比約7割

調査データ

前年同期比で過去最大増もコロナ禍前比は44%減

令和4年度上半期 沖縄県入域観光客統計

月別入域観光客数の推移(令和元年度~令和4年度)



令和4年度上半期入域観光客の状況(令和3年度との比較)

Table comparing tourism entry statistics in Okinawa Prefecture for the first half of FY2024 and FY2023.

令和4年度上半期国内観光客の状況(令和3年度上半期との比較)

Table comparing domestic tourism entry statistics in Okinawa Prefecture for the first half of FY2024 and FY2023.

令和4年度上半期外国人観光客の状況(令和3年度上半期との比較)

Table comparing foreign tourism entry statistics in Okinawa Prefecture for the first half of FY2024 and FY2023.

外国人観光客数、2年5カ月ぶりに計上

Vertical text article discussing the resumption of foreign tourism statistics in Okinawa Prefecture after a long hiatus.