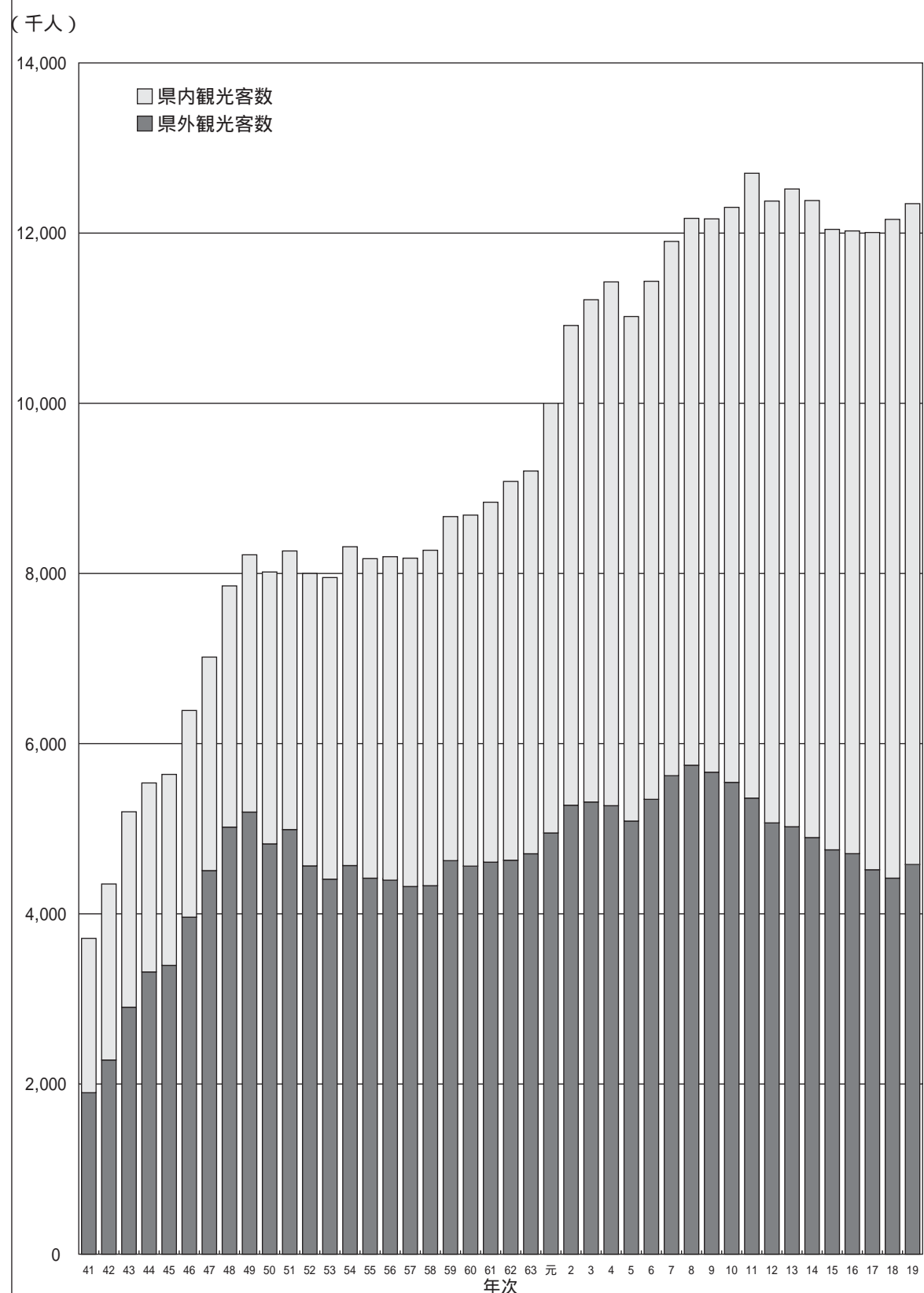


観光客数の推移



観光客数の推移

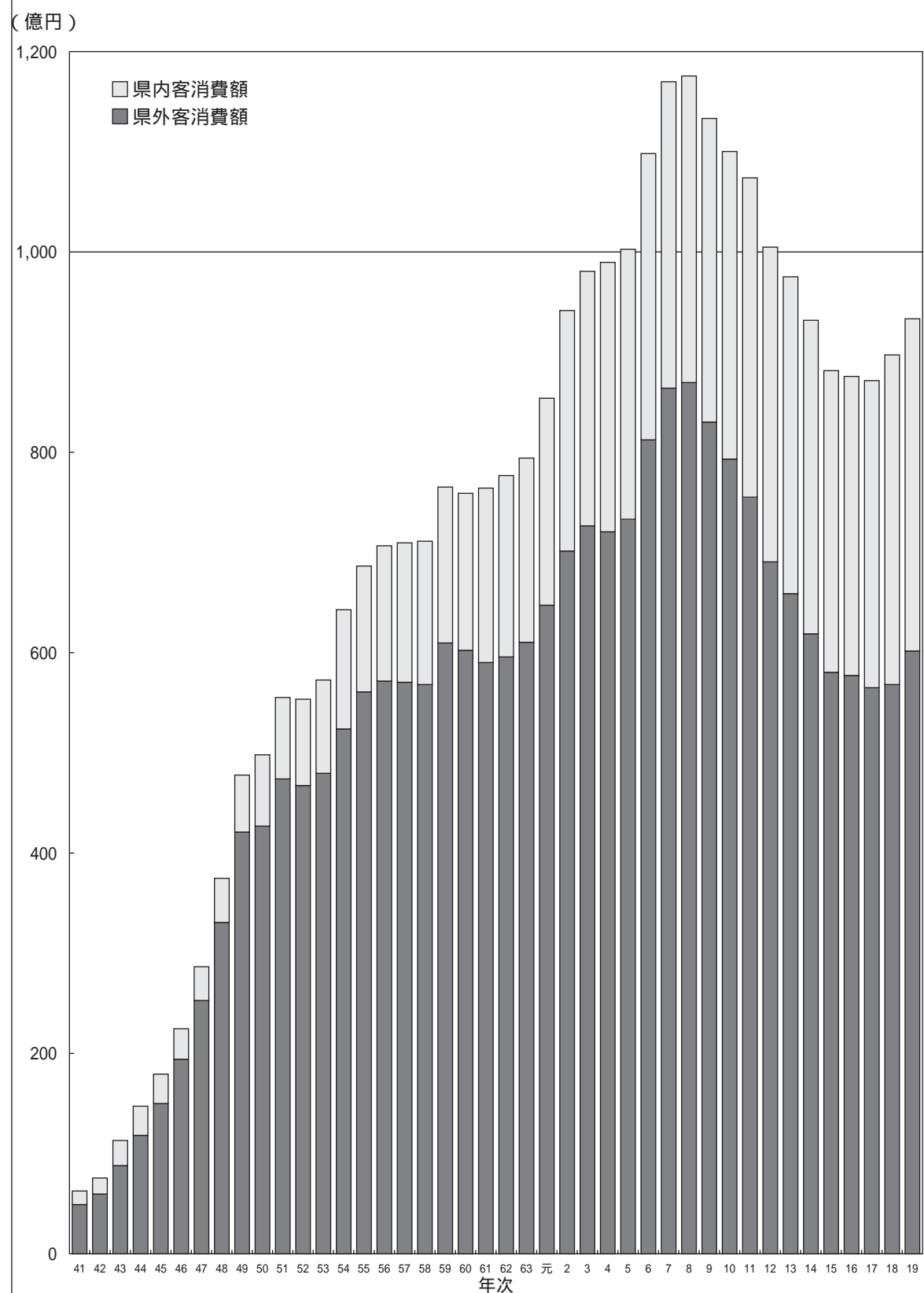
(単位:千人)

年次	観光客総数		県外客数		県内客数	
	実数	対前年比	実数	対前年比	実数	対前年比
41	3,721	116.4%	1,914	113.5%	1,807	119.5%
42	4,356	117.1%	2,271	118.7%	2,085	115.4%
43	5,229	120.0%	2,904	127.9%	2,325	111.5%
44	5,548	106.1%	3,324	114.5%	2,224	95.7%
45	5,662	102.1%	3,402	102.3%	2,260	101.6%
46	6,415	113.3%	3,965	116.5%	2,450	108.4%
47	7,047	109.9%	4,510	113.7%	2,537	103.6%
48	7,884	111.9%	5,031	111.6%	2,853	112.5%
49	8,252	104.7%	5,202	103.4%	3,050	106.9%
50	8,018	97.2%	4,846	93.2%	3,172	104.0%
51	8,292	103.4%	5,004	103.3%	3,288	103.7%
52	8,002	96.5%	4,566	91.2%	3,436	104.5%
53	7,964	99.5%	4,406	96.5%	3,558	103.6%
54	8,346	104.8%	4,585	104.1%	3,761	105.7%
55	8,187	98.1%	4,442	96.9%	3,745	99.6%
56	8,227	100.5%	4,416	99.4%	3,811	101.8%
57	8,214	99.8%	4,315	97.7%	3,899	102.3%
58	8,297	101.0%	4,340	100.6%	3,957	101.5%
59	8,695	104.8%	4,619	106.4%	4,076	103.0%
60	8,719	100.3%	4,570	98.9%	4,149	101.8%
61	8,866	101.7%	4,601	100.7%	4,265	102.8%
62	9,120	102.9%	4,627	100.6%	4,493	105.3%
63	9,229	101.2%	4,711	101.8%	4,518	100.6%
元	10,012	108.5%	4,947	105.0%	5,065	112.1%
2	10,948	109.3%	5,265	106.4%	5,683	112.2%
3	11,225	102.5%	5,309	100.8%	5,916	104.1%
4	11,448	102.0%	5,254	99.0%	6,194	104.7%
5	11,032	96.4%	5,086	96.8%	5,946	96.0%
6	11,448	103.8%	5,353	105.2%	6,095	102.5%
7	11,904	104.0%	5,623	105.0%	6,281	103.1%
8	12,179	102.3%	5,741	102.1%	6,438	102.5%
9	12,176	100.0%	5,654	98.5%	6,522	101.3%
10	12,310	101.1%	5,540	98.0%	6,770	103.8%
11	12,713	103.3%	5,361	96.8%	7,352	108.6%
12	12,370	97.3%	5,061	94.4%	7,309	99.4%
13	12,532	101.3%	5,014	99.1%	7,518	102.9%
14	12,386	98.8%	4,880	97.3%	7,506	99.8%
15	12,050	97.3%	4,739	97.1%	7,311	97.4%
16	12,028	99.8%	4,694	99.1%	7,334	100.3%
17	12,008	99.8%	4,501	95.9%	7,507	102.4%
18	12,163	101.3%	4,412	98.0%	7,751	103.3%
19	12,345	101.5%	4,568	103.5%	7,777	100.3%

宮崎県の観光客数の推移

県観光推進課
まとめ

観光消費額の推移



観光消費額の推移

(単位:億円)

年次	観光消費総額		県外客消費額		県内客消費額	
	実数	対前年比	実数	対前年比	実数	対前年比
41	63	108.6%	50	106.4%	13	118.2%
42	76	120.6%	59	118.0%	17	130.8%
43	113	148.7%	88	149.2%	25	147.1%
44	147	130.1%	118	134.1%	29	116.0%
45	179	121.8%	150	127.1%	29	100.0%
46	224	125.1%	194	129.3%	30	103.4%
47	286	127.7%	253	130.4%	33	110.0%
48	375	131.1%	331	130.8%	44	133.3%
49	479	127.7%	421	127.2%	58	131.8%
50	498	104.0%	427	101.4%	71	122.4%
51	555	111.4%	474	111.0%	81	114.1%
52	554	99.8%	469	98.9%	85	104.9%
53	573	103.4%	479	102.1%	94	110.6%
54	643	112.2%	524	109.4%	119	126.6%
55	687	106.8%	561	107.1%	126	105.9%
56	707	102.9%	572	102.0%	135	107.1%
57	710	100.4%	570	99.7%	140	103.7%
58	711	100.1%	568	99.6%	143	102.1%
59	765	107.6%	610	107.4%	155	108.4%
60	759	99.2%	602	98.7%	157	101.3%
61	764	100.7%	590	98.0%	174	110.8%
62	777	101.7%	595	100.8%	182	104.6%
63	794	102.2%	611	102.7%	183	100.5%
元	854	107.6%	647	105.9%	207	113.1%
2	941	110.2%	702	108.5%	239	115.5%
3	980	104.1%	726	103.4%	254	106.3%
4	989	100.9%	720	99.2%	269	105.9%
5	1,002	101.3%	734	101.9%	268	99.6%
6	1,097	109.5%	812	110.6%	285	106.3%
7	1,167	106.4%	863	106.3%	304	106.7%
8	1,174	100.6%	869	100.7%	305	100.3%
9	1,132	96.4%	830	95.5%	302	99.0%
10	1,099	97.0%	793	95.5%	306	101.1%
11	1,072	97.6%	755	95.2%	317	103.8%
12	1,005	93.7%	690	91.4%	314	99.1%
13	974	96.9%	658	95.3%	316	100.4%
14	930	95.5%	617	93.7%	313	99.2%
15	880	94.6%	580	94.0%	300	95.7%
16	875	99.5%	576	99.3%	299	99.9%
17	870	99.4%	564	97.9%	306	102.2%
18	896	103.0%	568	100.8%	328	107.0%
19	933	104.2%	601	105.7%	332	101.5%

新知事 の就任効果で 11年ぶり 県外客が増加

宮崎県観光推進課がこのほど公表した平成19年(12月)の同県の観光客数は123万4千人で、前年を1.5%、18万2千人(15%)上回った。このうち県外客は45万8千人で、前年比3.5%(15万6千人)増加。県外からの観光客が増加したのは11年ぶりとなる。同年1月の東国原英夫知事の誕生で、マスコミなどで同県が全国的にPRされたことが影響した。

調査データ